

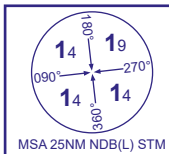
# INSTRUMENT APPROACH CHART - ICAO

# SCILLY ISLES/ST MARY'S

NDB(L)

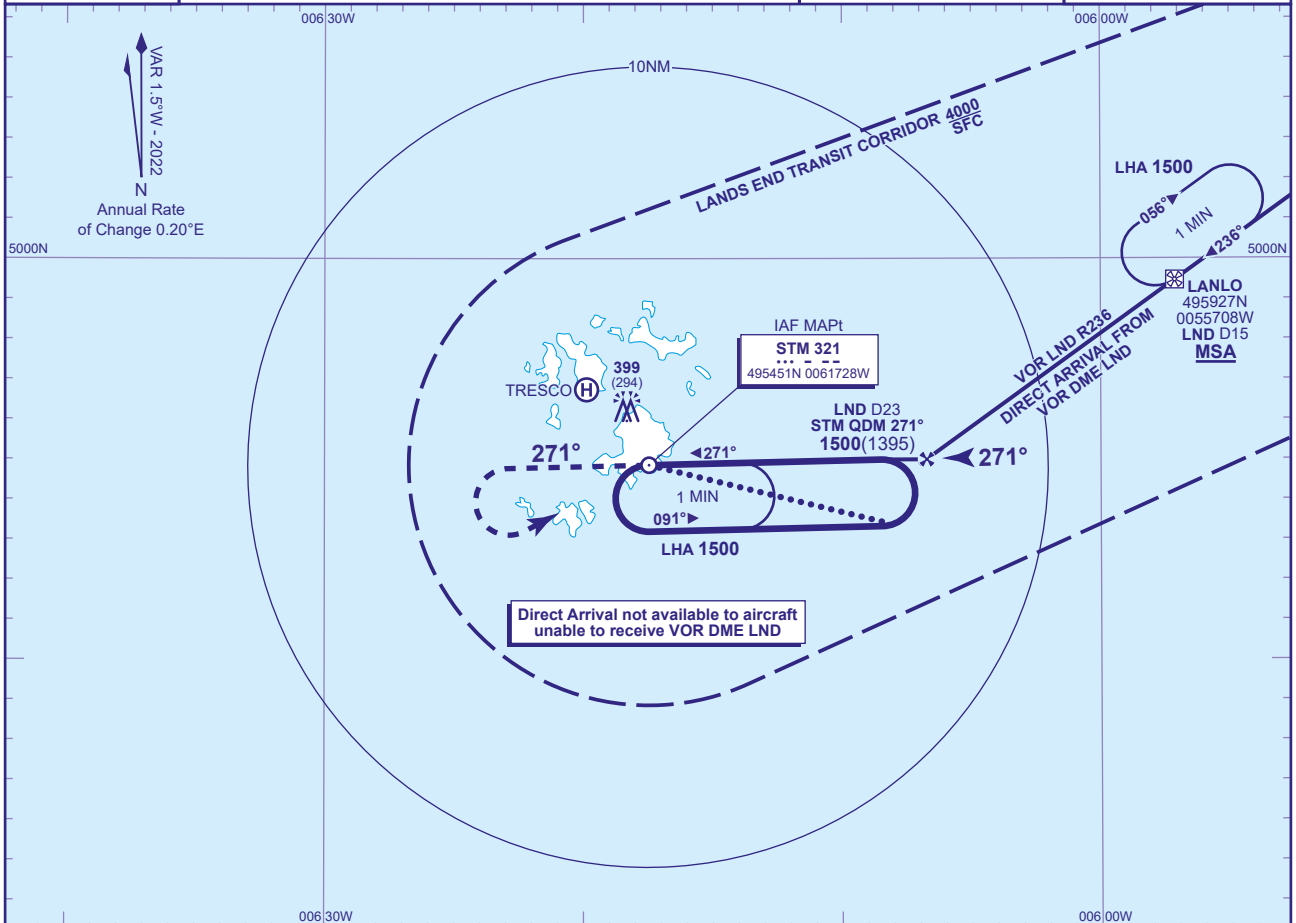
RWY 27

(ACFT CAT A)



APP	124.880	SCILLIES APPROACH	AD ELEVATION	121
TWR	124.880	SCILLIES TOWER	THR ELEVATION	105
			OBSTACLE ELEVATION	399 AMSL (294) (ABOVE THR)
			BEARINGS ARE MAGNETIC	

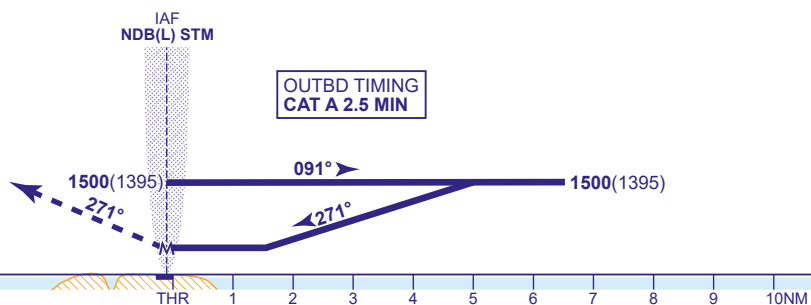
TRANSITION ALTITUDE	3000
---------------------	------



## MAPt NDB(L) STM

Climb straight ahead to **1500** then turn left to **NDB(L) STM** at **1500** or as directed.

## OUTBD TIMING CAT A 2.5 MIN



Aircraft Category		A
OCA (OCH)	Procedure	510(405)
	Total Area	700(579)
VM(C)OCA (OCH AAL)	South of RWY 09/27	520(399)

## ALTERNATIVE BASE TURN PROCEDURE

Overhead NDB(L) STM (IAF) at **1500(1395)** fly outbound on NDB(L) STM QDR 105° for 2.5 MIN. Base turn left onto FAT. When established continue as for basic procedure.

## DIRECT ARRIVAL VIA VOR DME LND

Arrival via VOR LND R236 **not below MSA**. After crossing LANLO R236 LND DME 15 (IAF) descend to be at **1500(1395)** by the FAF (R236 LND DME 23). When established on the FAT descend to MDA.

**NOTE 1** FAT is offset 2° and intercepts the RWY C/L 0.9NM before the THR.

**NOTE 2** VOR DME LND is not monitored by Scillies ATC.

**NOTE 3** Nominal distance FAF - runway threshold 6.7NM.

**CHANGE (4/21):** VOR LND RECALIBRATED. DIRECT ARRIVAL VOR LND RADIAL. LANLO HOLD.